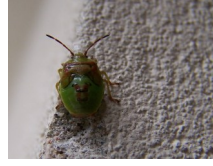




Classification

Insects

Skeleton on the outside, 3 body bits (head, thorax, abdomen), 6 legs, Adults have 2 or 4 wings, 2 antennae, compound eyes.



Arachnids

Skeleton on the outside, 2 body bits, 8 legs, no antennae



Crustaceans

Skeleton on the outside, 2 body bits, 2 pairs of antennae, 10 or more legs, most live in water.



Centipedes and Millipedes

Many body bits! 2 or 4 legs on each body bit, 2 antennae.



Molluscs (slugs and snails)

One large muscular foot, snails carry shell attached to their back, 2 pairs of tentacles, 1 pair holds eyes



Worms